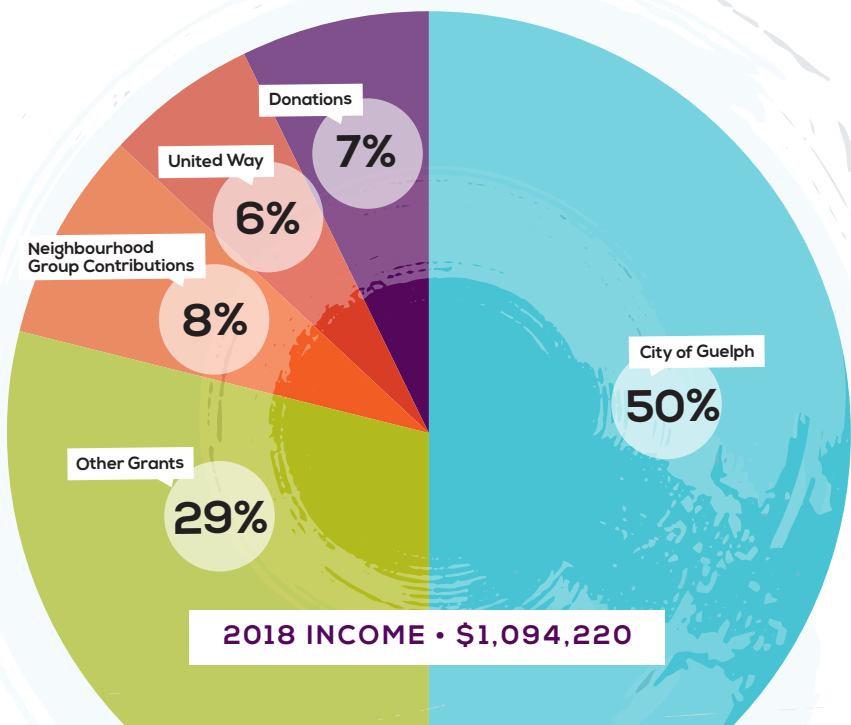




OUR MISSION IS TO SUPPORT NEIGHBOURHOOD GROUPS THAT ARE INCLUSIVE, ENGAGING, RESPONSIVE AND BUILD A SENSE OF BELONGING.

2018 EXPENSE • \$1,059,643



Board of Directors

Co-Chairs

Erin Harvey, F&CS
Patti Holmes, EPNG

Treasurer

Karen Kew, At Large Member

Secretary

Helen Fishburn, CMHA WW

At Large

Barb McPhee NRNG, OWNG
Linda Beale, BANG
Jeff DeRuyter, GPS
Michelle Lebon, GHENG
Jennifer MacLeod WDG PH
Michele Altermann, PGNG

Executive Director

Brendan Johnson

50%	Neighbourhood Group Allocation	14%	GNSC Administrative Salaries	8%	Playtime Program (GHC)	6%	Rent, office, insurance, financial admin	20%	Programs (NEHM, Summer Camp...)	1.5%	GNSC Events	.5%	Marketing/Website
-----	--------------------------------	-----	------------------------------	----	------------------------	----	--	-----	---------------------------------	------	-------------	-----	-------------------

In 2018...

1044
volunteers contributed

37,474
hours to Guelph neighbourhoods

\$610,284
valuing this time at Living Wage

\$250,000
in-kind contributions

to deliver 360 programs!

Supporting 13 Neighbourhood Groups to actively engage across Guelph

Brant Avenue NG ♥ Grange Hill East NG ♥ Two Rivers NG ♥ Exhibition Park NG ♥ North Riverside NG
Saint George’s Park NG ♥ Rickson Ridge NG ♥ Hanlon Creek NG ♥ Kortright Hills NG ♥ Onward Willow NG
Parkwood Gardens NG ♥ The Junction NG ♥ Downtown Neighbourhood Association



The GNSC is the heartbeat of Guelph.

The SEED would not exist if not for the GNSC’s vision and leadership.

Gavin Dandy, Director of The SEED

The GNSC is a key partner in helping us develop strong and connected communities.

As the GNSC meets the needs of thousands of individuals and families in Guelph, they truly exemplify what it means to be a community advocate; serving as a collective voice for positive neighbourhood change.

Shakiba Shayani, Director, Community Investment, United Way Guelph Wellington Dufferin

amplify

The GNSC plays a powerful role amplifying community voice and supporting impactful work to build healthy and inclusive communities.

Dominica McPherson, Coordinator Guelph & Wellington Task Force for Poverty Elimination

partnership

The partnership between the GNSC and CMHA WW is a beautiful example of how the informal and formal system in Guelph can come together to support people and families, to ensure they are well and safe.

Helen Fishburn, Executive Director, CMHA WW

connect

Get in touch with us by emailing admin@guelphneighbourhoods.org

Our offices are located at:
42 Carden Street, Guelph, ON N1H 3A2

gratitude



sincere and authentic approach

The sincere and authentic GNSC approach to inclusion is something we worked to emulate in our city-wide engagement efforts. The GNSC can act as a platform, convener, facilitator, conduit, advocate or leader depending on need and situation. They are a tremendous partner and resource for our community.

Stewart McDonough, Advisor,
Strategy and Innovation, City of Guelph

inclusion and diversity

Working across neighbourhoods in Guelph, the GNSC has shown true leadership regarding inclusion and diversity and models how we can begin to use language and power in different and more sensitive ways.

Julia Grady, Director, 10C Shared Space

protective factors to children and families

The GNSC initiatives provide protective factors to children, youth and families in need. They are collaborative, innovative and proactive and we are proud to support their work.

Jessica Barrie, Operations and Community
Engagement Manager, The Guelph Community
Foundation

profound influence

The type of initiatives supported by the GNSC can have a profound influence on conditions that can change health and well-being outcomes. The GNSC has a long track record of successfully and meaningfully supporting neighbourhood action, amplifying community voice, and sparking community led initiatives.

Jennifer MacLeod,
Manager, Health Analytics,
WDG Public Health

hope and possibility

The GNSC brings community voice to planning tables, programs, community events, and initiatives in a way that other organizations don't. We experience hope and possibility. The hybrid of partners and community working together is social democracy in action. We see the values of the GNSC shine through in the work that they do.

Raechelle Devereaux and
Kate Vsetula, Guelph Community
Health Centre

strong voice

As one of the founding members of the ACEs Coalition, the GNSC has always been a strong voice for putting our time and energy toward action that will have meaningful impact for people across our City.

Sarah Haanstra,
Toward Common Ground/
ACEs Coalition

GNSC Partners

City of Guelph

Family & Children's Services

Guelph Community
Health Centre

Guelph Police Service

WDG Public Health

Canadian Mental Health
Association WW

Upper Grand District
School Board

Wellington Catholic
District School Board

Immigrant Services
Guelph-Wellington

County of Wellington



THANK YOU FUNDERS AND SUPPORTERS!

LEVEL 1



LEVEL 2



LEVEL 3

Guelph United Ministries

Second Chance Employment
and Counselling Services

Guelph Police Services

Greater Toronto YMCA

TD Friends of the
Environment

THANK YOU to our fantastic volunteers! ❤️❤️❤️

